



SlimControl

User Manual

A SqueezeBox® Remote Control
for Windows Mobile® devices

A SqueezeBox® Remote Control



Content

GETTING STARTED.....	6
Setting up the cache	6
Connecting to SqueezeCenter.....	8
Selecting a Player	10
Selecting a Server.....	12
THE MAIN SCREEN.....	14
THE MUSIC BROWSER.....	16
Navigation	16
Making a Selection.....	18
Filtering a List.....	20
The Keyboard.....	20
THE PLAYLIST.....	22
Moving playlist tracks.....	22
Adding Tracks	22
PROGRAM SETTINGS.....	26
REGISTRATION.....	28
LEGAL NOTE.....	30



Getting Started

Setting up the cache

When you launch *SlimControl* for the first time, it will ask you where it should create a cache on your mobile device.

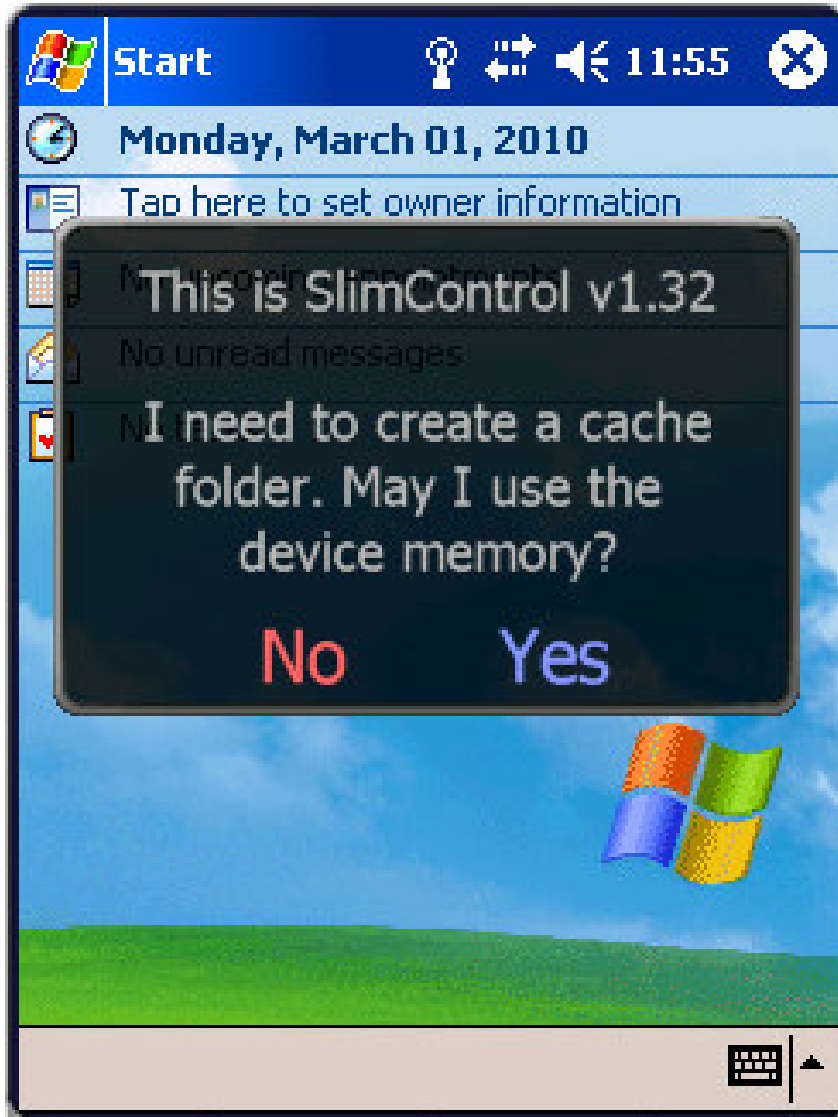
The cache is used to store information about your music collection and album covers. Caching helps to speed up things.

Selecting the *device memory* is usually the best option. So you can simply answer YES to proceed.

If you answer NO *SlimControl* will loop through all your memory cards and ask you whether to create the cache here.

Keep tapping NO until the memory card of your choice appears.

i The internal memory is faster than memory cards.





Connecting to SqueezeCenter

When you launch *SlimControl* for the first time it will auto-detect SqueezeCenter servers in your network.


If you have activated *security settings* in SqueezeCenter SlimControl will prompt you to enter <username> and <password>

In that case use the on-screen keyboard to enter them.

i The on-screen keyboard works like the keypad on a phone. Every key serves several characters.

Tap a key repeatedly to get to the next character.

Tap-and-hold a key to access the character shown at the bottom.

Use the  key for <backspace> or to close the keyboard via *tap & hold*.

If the automatic server detection fails or you want to connect to a different server, continue with:

Selecting a Server



Selecting a Player

The first time

When *SlimControl* connects to a new server it will pop up a list of players connected to that server.

Tap on a player to select it as current player.

You're ready to go.

Switching to another player

At a later time you might want to control a different player in your home network.

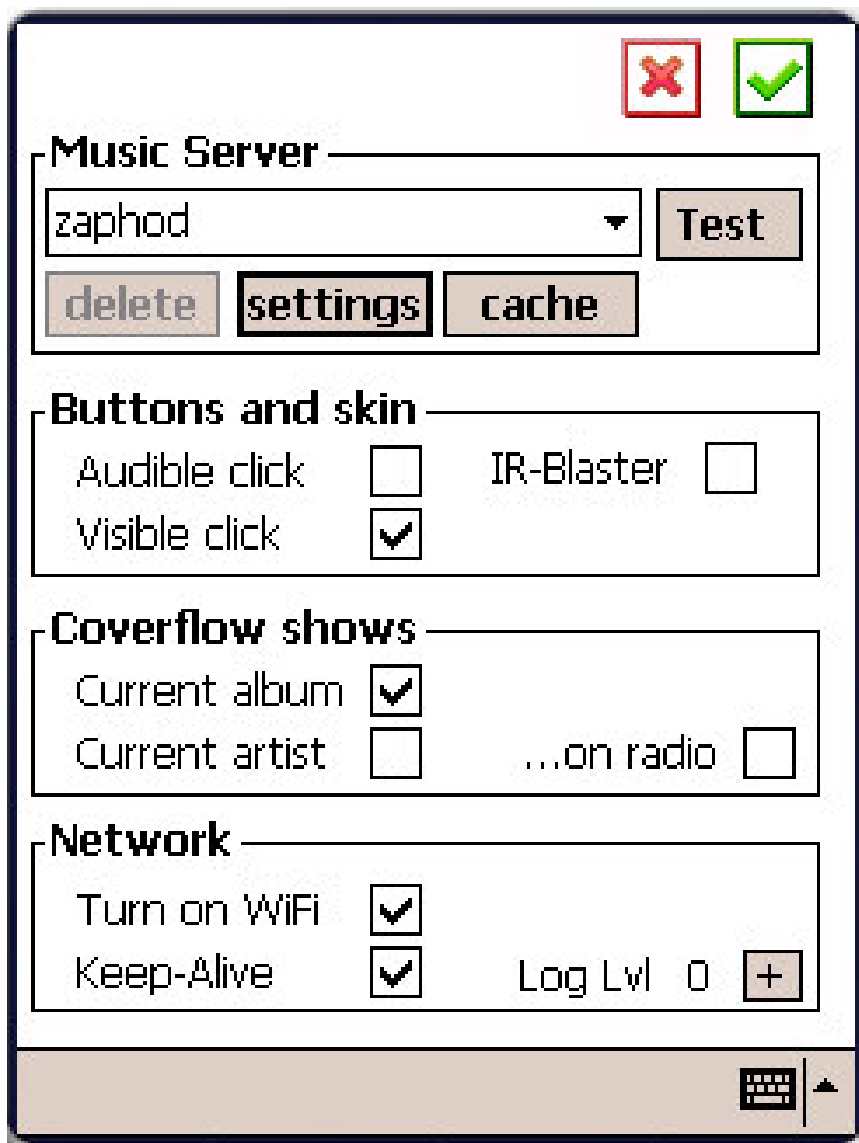
To switch to another player open the player list:



Tapping on a player now will not immediately switch to that player. Instead it will open the *Miniplayer* panel.

SlimControl will switch to the selected player when you close the player list . Either by *right-swipe* or by tapping





Selecting a Server

Open the settings to enter the address of a SqueezeCenter server



Program Settings

Skip the registration dialog and proceed to the settings. In the *Music Server* text box, enter the IP address or name of the PC or NAS SqueezeCenter is running on.

i You can find out the IP address by opening the [Web-interface of SqueezeCenter in a browser](#). Check the browser's address bar.

! The IP '127.0.0.1' or 'localhost' is not a valid server address. It is merely a placeholder for 'this PC'.

If - in SqueezeCenter - you have enabled security, hit the **SETTINGS** button below the server IP and enter username and password, respectively.

Check the *Logon* checkbox if you want to enable the SqueezeCenter secure logon.

Hit the **TEST** button. *SlimControl* will echo the server version if the test succeeds. Close the dialog via the button.



The Main Screen



The player control is located in the lower part of the main screen. The buttons are activated by a single click. Their respective purpose should be obvious.

Below the buttons you will find the track slider, which indicates the current track position. You can move the slider in two ways:

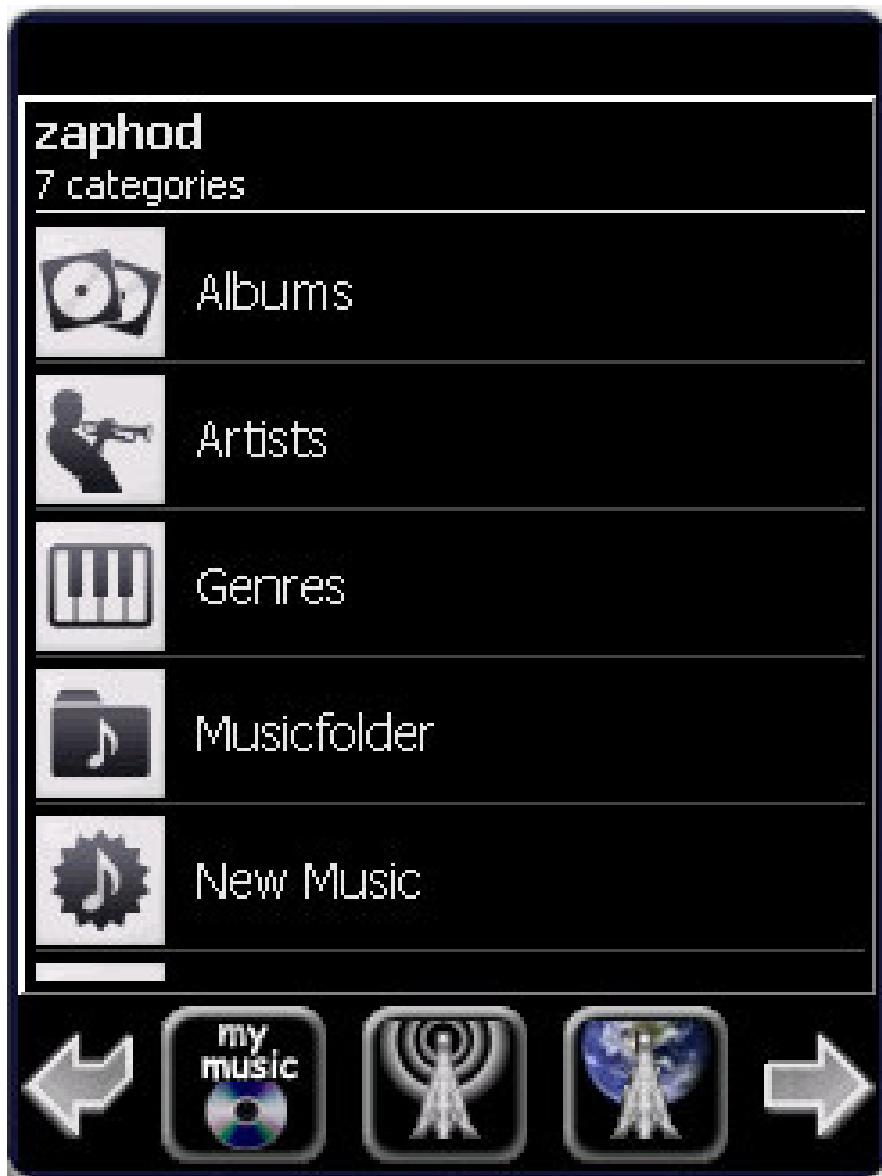
1. Tap & hold the slider. While holding down, sweep left/right and the slider will follow. The new track position is assumed once you let go of the slider.
2. Single-click anywhere on the slider to jump to that track position.



The Music Browser

The music browser allows you to browse your personal music collection as well as SqueezeCenter plugins.

You can add/insert tracks, albums, or other playable items into the playlist of the currently connected player.





Navigation

The buttons at the bottom of the browser window facilitate navigation through various music categories:



My Music Internet Radio Services Favorites
Search

There are two special navigation buttons:

-  **Leave the browser, return to main screen**
-  **Show more navigation buttons**

i The navigation buttons will always take you back to the top-level of a category.



Making a Selection

To **select** an item from the list tap anywhere in the list.




Tap a **selected** item again to browse into that item.

In the screenshot to the left the ALBUMS item was selected and then re-tapped. The list now shows all ALBUMS in your home collection.

You can browse further down the hierarchy as long as the selected item contains any sub-items. In ALBUMS you could tap an album to view its TRACKS.

i As you browse, new lists will slide in from the right. To go *back* simply *right-swipe* the list. That is, *tap & hold* on the list and *shove* it to the right.


As soon as you have selected a *playable* item the navigation bar changes, offering now options to place the selection in the current playlist:

-  **Play selection** (original playlist is lost)
-  **Insert selection after current track**
-  **Append selection after last track**

i The 'selection' is usually the selected item. If nothing is selected, the 'selection' is everything you are seeing in the current list.



Filtering a List

If a browser list contains more than 40 items, a keyboard icon  will show in the lower right of the list. Tap the icon to open the [The Keyboard](#).

Enter the first letters of your search phrase to filter the list for matching words.


i The search phrase *all* will find:


All that you can't leave behind
Allan is back
I want it all

The Keyboard

You can use the keyboard to search for keywords in the currently displayed browser list. Also the keyboard will automatically pop up whenever text input is required by a plugin.

The keyboard works like a cell phone keypad: Every key codes for several letters. E.g. tap the 'abc' key 3 times to issue the **C** character. Tap&hold the key for 1 second to issue the decimal **1**.

To erase characters tap the backspace  key once.

To hide the keyboard, *tap & hold* the  key for 1 second or completely erase the search phrase.



The Playlist

Every player has a playlist associated with it. The playlist view shows the playlist of the currently selected player.

The view displays 30 entries. If the playlist contains more items, you can navigate back and forth via *sweep-left* and

Tap a playlist item to highlight it. Tap a highlighted item again to *play it now*. The player than advances or steps back to the selected track.

Moving playlist tracks

Tap & hold a playlist item until the context menu appears.

You can move the item up/down by one or place it after the current track to play next. Or remove the item from the playlist.



Adding Tracks

Use the music browser to add tracks, radio streams, or services to the playlist.



[The Music Browser](#)





Coverflow

The coverflow filling the top half of the main screen shows the artwork associated with the currently playing track.

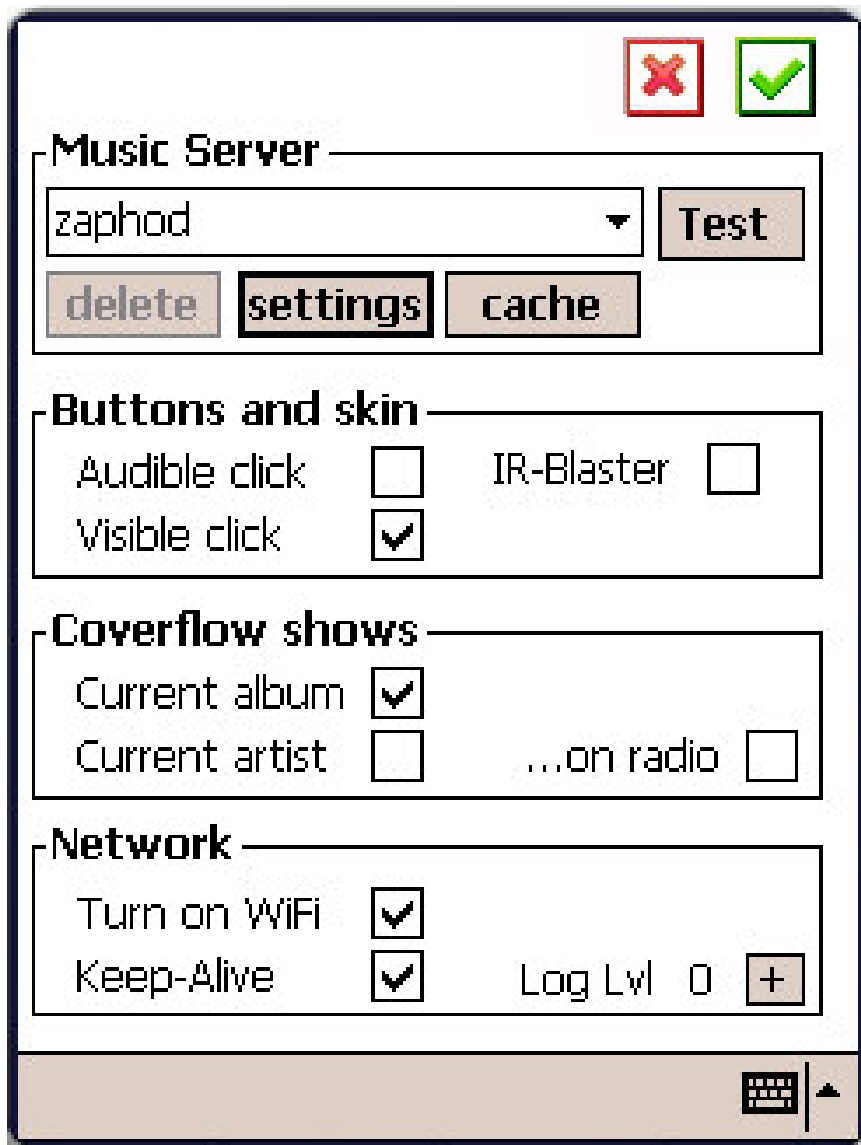
If more than one cover is being displayed, the coverflow may be scrolled by holding down and sweeping your finger horizontally..

i Initially, the coverflow will show only one cover at a time. To change this behavior:



Program Settings

In addition to scrolling, you can 'flip' a cover, by sweeping upward across the cover image.



Program Settings



Server Settings

Music Server IP-address of the SqueezeCenter server

delete Click to to remove this server

settings Click to enter SqueezeCenter security settings (username/password)

cache Click to enter cache settings

Buttons and Skin

Audible Click Button-Clicks make a 'beep' sound

Visible Click Button-Clicks give a visual feedback

IR-Blaster Control the volume via +/- buttons rather than with a slider (IR-Blaster compatible)

Coverflow shows

Album Show only album of the current track

Artist Show all albums of the current artist

..on Radio As above for radio streams

Network

Turn on WiFi Power-up the WiFi card on program start

Keep-Alive Keep the device from entering standby

Log-Level Create no (0) or increasingly detailed log file. This is for error-tracking purposes.



Please enter your registration key.
You can obtain the key at:

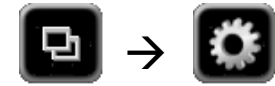
 sc.sciatec.de

Your serial No.

Registration key 

Registration



You must register *SlimControl* in order to enjoy the full-featured version. The registration key is only €10 and will grant you regular and **free updates in the future**.

Within SlimControl

You can register from within *SlimControl* if you have internet access on your mobile device.

In the registration screen tap sc.sciatec.de. The online registration form will come up in your browser. Click



and follow the PayPal payment procedure.

On your PC

Open sc.sciatec.de/slimcontrol_register.shtml

Fill in the serial No. from the SlimControl registration screen (see screenshot) and complete the PayPal payment procedure.

In any case: the registration key will be sent to you via email once the payment has cleared and within 24h.

ENJOY!



Legal Note

Logitech, SqueezeBox, and SqueezeCenter are trademarks of Logitech Inc.

Windows Mobile is a trademark of Microsoft Co.

All other trademarks are the property of their respective owners.